



# Broomhaugh & Riding Parish Council

*Caring about where you live*

## NEWSLETTER

Issue 7 - October 2021

### Parish Council Information

Your local parish councillors are:

Pam Bridges  
Eileen Carew  
Andy Dunhill  
Christine Howe (Chair)  
David Irwin  
Stephen Lightley  
David McKenzie MBE  
Jill Mills  
Brian Singer (Vice-Chair)

Contact details for  
Catherine Harrison,  
Parish Clerk  
01434 682348 (office hours  
only please) or email  
[ridingmillclerk@gmail.com](mailto:ridingmillclerk@gmail.com)

*Dates for forthcoming Parish  
Council Meetings*  
7.45 pm  
(public questions from 7.15 pm)

8<sup>th</sup> November 2021  
13<sup>th</sup> December 2021  
14<sup>th</sup> February 2022  
14<sup>th</sup> March 2022  
9<sup>th</sup> May 2022  
11<sup>th</sup> July 2022  
12<sup>th</sup> September 2022

Please consult agenda  
for venue

Annual Parish Meeting  
May 2022 – date to be  
confirmed

Contact details for County  
Councillor Anne Dale,  
01434 673326 or email  
[anne.dale@northumberland.gov.uk](mailto:anne.dale@northumberland.gov.uk)

Keep updated with village news  
or check out the Minutes from  
PC meetings  
[www.ridingmill.org](http://www.ridingmill.org)

## Yearly Review

### Christine Howe, Chair of the Parish Council

20/21 saw a continuation of the pandemic life we had got used to. Whilst daily life continues to improve with the easing of lockdown, several of our parishioners remain very cautious about the return to normal life - whatever that is! Lots of the clubs based in the village hall resumed in September; the coffee mornings are back, now held in the Supper Room, which is a great step forward.

The Parish Council welcomed two new members, David Irwin and Stephen Lightley, and this means we have a full complement of councillors – a rare event indeed.

Key areas of activity this year have been the extensions to the Sports Club and the Neighbourhood Plan.

The **Sports Club** has been brought into the 21<sup>st</sup> century with much needed indoor toilets, showers, extended changing rooms and disabled access. It wasn't, however, without its problems and Covid has meant an extended programme. Although not completely finished it is almost complete and the PC expect to have a formal opening in due course, to which the village will be invited.



The cricket club All Stars programme, we understand, was successful and brought more of the village along, who haven't previously been aware of this village amenity. We hope to extend the use of these facilities now and welcome more people to the sports field. You never know, one of the children who took part, might be a budding Root or Ali.

### Neighbourhood Plan:

Following the village survey, carried out over the winter of last year, (the response of 54% was very encouraging and statistically valid), we have put together sub groups to develop ideas for the improvement of the village in the areas of Built Environment/ Housing, Natural Environment, Local Economy, Renewables/ Climate Change, Transport/ Streetscape

and last but not least Health & Wellbeing. I would like to thank our volunteers for the time and effort they put in, which was by no means a small task. The work will be ongoing and now that we have a planning consultant on board, courtesy of a grant from Locality, we are working towards a more formal plan. We are holding a community presentation of ideas so far in November, with another one early next year to incorporate feedback

See the back  
page for your  
guide to what's  
on and how to  
get involved.

and preparatory to submitting our draft plan to Northumberland County Council. We hope that you will participate in the community sessions, as these are the chance for you to comment and submit any ideas of your own.

**Mill Pond**- one of the few green spaces in the village has been hard hit by ash dieback. Cutting down the most affected trees and the most dangerous is an ongoing process but does have the added benefit of bringing light to encourage the sapling trees beneath, in this pleasant woodland. The process of clearing the pond area has begun and early September saw Tyne Rivers Trust volunteers clearing scrub from the leat and pond area and starting to make new paths. The next stage will be to monitor the water levels in order to determine what further action to take.

Earlier this year we received 105 trees free gratis from the

Woodland Trust and, with the help of volunteers and the Scouts, we planted them all in areas most needed. We anticipate that another 105 trees this autumn would not come amiss.

**Graveyard** – it was with some misgivings that we saw the cutting down of most of the perimeter trees in this church area; but what has emerged is a bright, light area for contemplation. The space continues to be landscaped and has been properly connected to the Spinney, which will also be undergoing improvements- another green space to sit.

**Village Trail** - Research, on the village history and important buildings was completed earlier this year and planning permission has been sought to erect two information boards detailing a village trail - one adjacent to the village hall and one in the old

playground. We hope to see these installed before the end of the year. Leaflets describing the subjects will also be available.

**Planning:** Although we haven't yet been informed formally, we understand the contentious Fold House project has been submitted for appeal. We await details.

Another project which was the subject of strong village views was the Manor House project for 12 new houses. The Parish Council objected mainly on the grounds of poor and dangerous access, drainage problems in that area, tree removal and the lack of affordable housing. The application has yet to be determined.

As always, we welcome the input and support of residents. Roll on 2022!

## Parish Communications

The Parish Council is trying to improve the way that it communicates with the village and has now created an email list. If you are not already on the list and would like to join - we promise not to send you too many emails - then you can sign up at [www.ridingmill.org](http://www.ridingmill.org) by completing the pop up form.

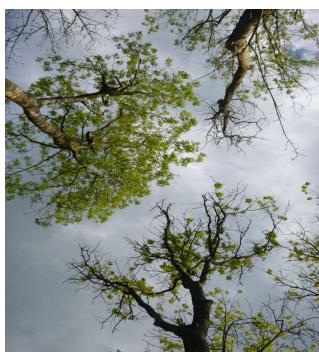
## SMALL GRANTS:

The PC can on occasion offer small grants to clubs and organisations in the village. Further information can be obtained from the Clerk and written requests should be submitted by **31<sup>st</sup> October** each year.

Last year, the Preschool and Tuesday Drop in Group received a grant from the PC together with other local organisations such as Tynedale Hospice at Home, Citizens Advice, The Charlotte Straker Project and Betel in Hexham.



**Trees** – We continue to note the sad decline of many of the ash trees throughout the village. In the first stages of ash dieback, trees will show leaf loss from the tips of the branches but we have found that within a couple of years leaf coverage is poor, with the trees late to come into leaf and early to lose them. Whilst a tree is unlikely to fall per se, it can easily drop branches as the disease makes it very brittle. If you have an ash tree within your garden, please have a tree surgeon inspect it regularly. Leaving the tree too long with the disease can cause problems when it does eventually need to be removed as it can be too weak to climb and specialist machinery will be required. Unfortunately, Marchburn Woods has a



profusion of ash trees, 50+ in just the area nearest the pathways. We are removing them on a priority basis and will leave those deeper in the woods to decay naturally.

On a more positive note, we received a number of native saplings from the Woodland Trust earlier this year and, on a very wet weekend, planted them with the assistance of village volunteers – thank you to all involved.



Are you fed-up with doing the same old walks? View the Walking in Northumberland website [www.walkinginengland.co.uk/northumberland](http://www.walkinginengland.co.uk/northumberland)

There are hundreds of walks to download and print for free together with contact details for walking groups in the county.

## Sports Pavilion is finally fit for purpose

After many years in the planning, the redevelopment of the sports pavilion finally got underway in April this year. Two side extensions and a rear extension have been added, increasing the size of the changing rooms and providing indoor toilets. The pavilion is also now accessible for those with mobility issues with improved access and toilet facilities.

These improvements have been made possible with grants from the Football Foundation, County Councillor Anne Dale's Members' Allowance Scheme and Active Northumberland, together with funding from the Parish Council and the Cricket Club.



The Cricket Club has had an extremely active year fundraising. They have purchased and installed a new electronic scoreboard as well as increasing the seating capacity around the ground. The cricket season has now ended but anyone visiting the ground recently should have been impressed with the standard of the field which has looked superb all summer.



In early May there was added impetus to complete phase 1 of the build – the installation of toilets – as the Cricket Club had



The old pavilion with only an outside toilet



Newly refurbished pavilion



All Stars in May



enrolled 43 local children on the All Stars Cricket coaching programme. All Stars introduces children from the ages of 5 -11 to cricket and it was a wonderful sight to see so many village children and their families enjoying the facilities.



The Sunday morning footballers continue to perform well. Last season, they secured runners-up position in the Hexham & District Sunday League Division 1. We wish them further success at the start of this new campaign.



*The future:* The new facilities are available to all the community and the Parish Council is exploring with the Sports Club how we can encourage further use of the grounds. Hopefully, a local mum will begin a buggy fitness class later in the month and there are plans to introduce girls' football from Easter next year. If you know of any groups that might be interested in using the sports field, do encourage them to get in touch.



## Historic Mining in the Parish

I'm sure many of you will have walked through the woods above the A68, using the footpath past Wentworth Grange and then carrying on over the A68 and up the footpath into Shilford West Wood, for some of the circular walks from the village. Some may also have observed from the paths some unusual depressions and mounds in the woods also, perhaps wondering what they are. They caught my attention many years ago when I first moved into the village as they looked very much like ancient old mine workings and bell pits.

The geology of the hillside above the village is quite interesting, consisting of lithologies from the Stainmore Group, deposited as interbedded layers of sandstones and limestones between 319 to 329 million years ago (Ma), and transitioning into the Lower Coal Measures (the lowest group of exposed coalfields of Durham and Northumberland)

between 318 and 319 Ma. The contact between the two groups is marked by the Quarterburn Marine Band (QMB), a marine mudstone containing the fossil *Lingula* and is the marker at which the base of the Westphalian Series and Coal Measures is taken. Above and below the Quarterburn Marine Band are beds of sandstone, and are probably the sandstones visible in the cutting created for the A68, roughly half way up.

Coal was historically worked in Broomley Fell Plantation, higher up the hillside sequence, over a couple of centuries ago by adit, a tunnel driven horizontally or slightly inclined to intersect the coal seams. The same seams were also worked by surface mining methods a few years ago as well.

The strata in Shilford West Wood would be lower in the geological sequence and very close to the base of the coal measures and the Quarterburn Marine Band and it is not clear from geological sheets what the former working you can



observe there were for - although some minor coal outcrops are noted. Geological maps are always only a guide, but the BGS ones for the area are fairly accurate, and Marion Cooke's excellent book on the history of the village does reference working of coal in these woods over many centuries.

Finding any specific detail on these ancient old workings is difficult, as they will have been too small and ancient for recording to have been made and probably were before legislation required it. Examination of the geological sheets does show that thin seams of coal are

present above the QMB and therefore likely outcropped in the woods, although being at the base of the coalfield they will have been thin and of much poorer quality compared to those much higher up the sequence in the main Durham coalfield.

Any suspected old mining features must only be observed from a distance and should not be approached or walked over for safety reasons; however, some of the possible examples can be seen from a distance when on the public footpaths through the woods, while the woods are of course private and access should only be taken on the public rights of way.

**Barney Pilgrim**

The **Tyne Rivers Trust** (TRT) have assisted the Parish Council with two projects this year. They have helped coordinate the removal of **Himalayan Balsam** from along the March Burn. TRT are systematically clearing the tributaries in the hope of eventually removing all Balsam from along the Tyne. Although loved by beekeepers, the plant competes with native plants for light, nutrients, pollinators and space, excluding other plants and reducing biodiversity. It dies back in the winter, leaving river banks bare and open to erosion. The TRT brought along their own volunteer task force and were ably assisted by many residents. A productive day was spent



clearing plants in Broomhaugh Wood. Thanks to everyone involved, including residents whose gardens abutt the March Burn, for clearing this invasive plant.

**Mill Pond:** TRT again brought their volunteer team to help clear the pond and leat area in

March Burn woods. The Parish Council eventually hopes to reinstate the pond and make this an attractive area for villagers to enjoy. For now, we are simply planning to monitor the water level in the pond over the winter before deciding on the next stage. More updates will follow in the new year.

## Local Transport Plan (LTP)

Each year, the County Council asks us to submit three highways or transport priority issues for possible inclusion in the LTP programme. This year, we have suggested improvements to the pavement to Stocksfield to make it into both a footpath and cycleway, a footpath/cycleway at the top of Whiteside Bank to connect the Right of Way to the Healey Road as currently walkers have to navigate the verge on the A68, and finally, we have asked for some of the minor village roads to be resurfaced. It's never possible for the Council to include all the proposals from each parish and a strict set of criteria is used to judge each one. We should find out early next year if any of our priorities have been chosen.

# NEIGHBOURHOOD PLAN



## Progress Report

Following the village survey early in the year, the creation of working groups and the offer of a grant from Locality to engage a consultant, work on the Neighbourhood Plan is well underway.

The survey produced a very positive response. People who call the village home tend to stay in the village, some for over 50 years. However, this has resulted in an aging population and there is a desire to achieve a more balanced demographic. The overwhelming reason people like Riding Mill is the easy access to surrounding countryside, the green spaces, the rural atmosphere and the good transport links. Through the *Policies* and *Community Actions* within our Neighbourhood Plan, we want to preserve the character of the village, whilst addressing concerns that have been evident since the last Parish plan, prepared in 2002. Riding Mill has a strong sense of community and this will be at the heart of the vision of our plan. There was, and still is, a desire to provide some affordable housing, as well as making it easier for people to move to smaller houses within the village as long as the wonderful green spaces surrounding the village are protected. Much of this is safeguarded by green belt status. This has ensured that the village has

been protected from urban sprawl and has helped to maintain its identity and separation from other settlements, as well as providing an important habitat for wildlife.

To develop the Neighbourhood Plan, the Parish Council has facilitated the establishment of six working groups and delegated authority to a Neighbourhood Plan Steering Group, which will guide and agree the content of the plan up to Consultation Draft stage. The six groups cover Built Environment, Natural Environment, Transport, Renewable Energy & Climate Change, Health & Wellbeing, and the Local Economy.

To give you some idea of the progress and ideas so far:

### **Built Environment:**

Through the government's support package, we have commissioned a housing needs assessment, undertaken by Aecom, which will build on the survey feedback. The results are expected shortly and will inform our policies. The Northumberland Local Plan identifies Riding Mill as a service village. Therefore, it is expected that we will provide some new housing at a level proportionate to the village. The Neighbourhood Plan will identify planning policies which will require that any new housing to be provided where there is a need, has minimal impact on the green belt, maintains our rural character, is sustainable, and in line with our design code. A list of heritage sites and possible small



*Residents value the good transport links*

## COMMUNITY EVENT

Residents' views are key to the preparation of a Neighbourhood Plan and we therefore want to obtain feedback to our proposals as we complete each stage.

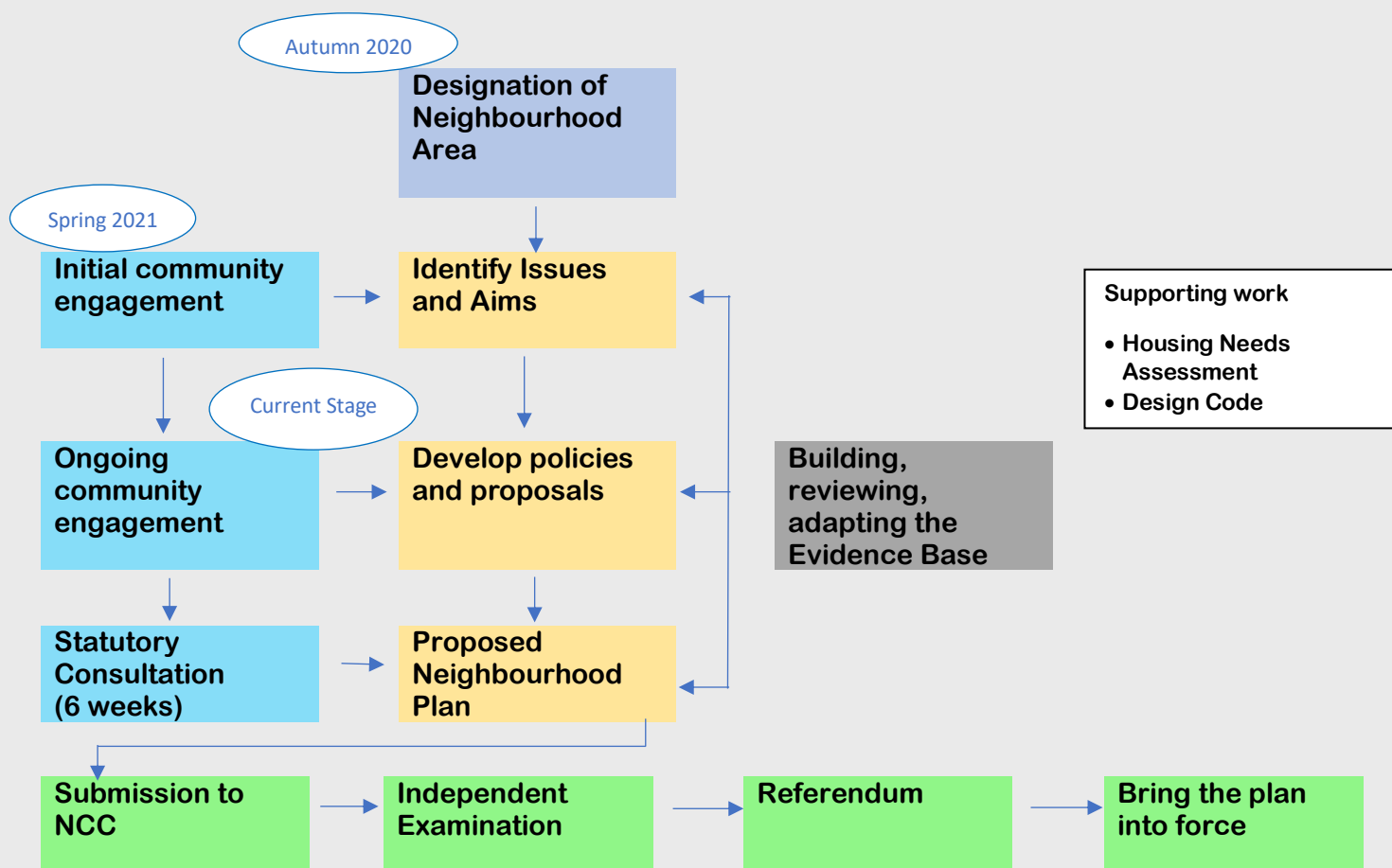
Our first community event will be held on

**SATURDAY 13<sup>TH</sup>  
NOVEMBER**

in the Millennium Hall from  
10 am - 3 pm

We hope that you will join us and share your thoughts.

## The Neighbourhood Plan Process



housing sites is being prepared and will be available shortly for comment and discussion.

### Natural Environment:

Tree coverage in the parish is estimated at 18 per cent. Whilst this compares well to Northumberland as a whole at 8 per cent, the European average is 37 per cent and the world average is 30 per cent. Our aim is to increase tree cover in new developments and on surrounding land. We want to create green areas around any new housing, with a minimum percentage of tree canopy cover as well as preserving natural woodland and meadows, creating new meadows where feasible and identifying green spaces to be protected that are not

already afforded such protection in the Local Plan.

### Health & Wellbeing:

Along with the Natural Environment group, we want to protect the rural character of the parish from the impact of any development and, wherever possible, enhance the landscape, the biodiversity, footpaths and bridleways. We support the County Council in trying to regain the riverside walk to Corbridge and hope to encourage the widening of the pedestrian route to Stocksfield. We want to encourage greater use of the Sports Club with a wider range of residents and will encourage its use by the school and scouts/cubs.

**Transport:** Through *community actions* identified in the plan, we will seek to reduce the negative impact of road traffic in the village. Traffic monitoring tapes were installed in the village earlier this year and have given us a good idea of the volumes of traffic passing through the village. Speed reduction measures are being discussed. Parking on streets is a particular concern in the village, to which we have not yet been able to find a resolution. Electric charging points will be considered. We will seek to ensure that the existing rights of way for walkers and cyclists are safe, maintained and restored as necessary.

**Local economy:** We recognise the growth in home working and wish to ensure that local services, including improved broadband connectivity, meet the requirements of those choosing to spend more time working from home. Developments which provide an additional room downstairs, and close to an entrance, will be welcomed. Developments which make it relatively easy to add craft workshops to residential accommodation will be welcomed provided that they meet the requirements set out above for the built environment. The village recognises the value of the shop and the pub and we will act to protect their

current use including nominating them as assets of community value.

**Renewable energy & Climate Change:** It is proposed that the village adopts an ambitious, but necessary, objective in relation to climate change and renewable energy – we have declared a climate emergency, but this has to be more than words. We aspire to become a 'zero carbon' village by 2035, using the following objectives: firstly, aiming to reduce carbon emissions through effective built environment design; secondly, and especially for existing properties, encouraging reductions in energy use through efficiency measures; thirdly, through greater use of energy from renewable sources (which may include some local generation); and, lastly, if necessary compensating for carbon emissions, for example, through planting more trees and hedges. It is thus proposed, if feasible, that new buildings, and extensions requiring planning permission, be designed to minimise the use of energy and clean



*We want to increase tree cover as well as preserving natural woodland and meadows, creating new meadows where feasible.*



*We would like to see the footpath to Stocksfield widened to create a safe route for both pedestrians and cyclists. Cyclists would be able to link to the Hadrian cycleway at Bywell.*

water in anticipation of future requirements for carbon neutral works and applications.

Whilst the Neighbourhood Plan will focus specifically on planning policies, each of the groups are also considering *community actions* – actions that can improve the facilities in the village. Previous ideas, that are now coming to fruition, include the pedestrian crossing that will shortly be installed on the main road outside The Wellington, improvements to the Mill Pond area, and heritage trail boards that will be installed soon.

*We intend to illustrate all of the Neighbourhood Plan proposals at an exhibition to be held on Saturday 13<sup>th</sup> November in the Millennium Hall. If you are unable to join us, please use the response form on the next page to return any comments you may have at this stage. Please leave the form in the box at the Parish Hall. Anyone still wishing to participate should make themselves known to the Parish Clerk.*

## Explanation of terms:

The **Housing Needs Assessment** provides vital evidence to help understand the expected demand for housing in the parish over the plan period. It considers the need for affordable housing, and how this should be split into the different tenures; the type and size of dwellings required to develop a housing stock that is aligned with community

needs; including the needs of specialist groups, e.g. housing for the elderly.

What is **Affordable Housing**? Affordable housing is for people who cannot afford to buy or rent a home on the open market. Why might we want affordable housing in our village? House prices have outgrown incomes in recent years. People on low incomes – often undertaking key roles in the community such as

teaching assistants, farm workers or shop and pub staff – cannot afford to set up home in the village. This means that young people in particular are moving away with negative impacts on both themselves and the community. Social and family networks can break down whilst local services such as schools, public transport, shops and pubs become less viable. Affordable housing helps to sustain communities by

offering local people the chance to stay living in the place where they have strong connections.

The **Design Code** provides clarity on what is expected for any new development in an area. It should demonstrate good quality design ensuring developments respond to and integrate with local surroundings and landscape context as well as the existing built environment.

The Parish Council undertook a village survey at the beginning of 2021 - the last one had been in 2002 - to seek views and opinions as part of the preparatory work to develop a Neighbourhood Plan. This achieved a very high response rate of 54 per cent, which was very encouraging, with the profile of respondents mirroring very well the population according to the 2011 census. The biggest reason to live in Riding Mill is easy access to



any new housing, most  
wanted to see  
appropriate development  
focusing on sustainable  
housing, affordable  
housing and energy

efficient housing. There was agreement however that Riding Mill specifically did not need any more larger houses and a majority were strongly against any building in the green belt. Given the current debates on climate change, it was encouraging that 40 per cent of respondents report that they sourced at least some of their energy from renewable sources. The full report is available at <http://iqa.fyi/psr>



*If you are unable to attend the community event on Saturday 13<sup>th</sup> November but wish to comment on the proposals outlined above, please do so by completing the form below and returning it to the NP comment box left outside the Parish Hall. Alternatively, please email the Clerk at [ridingmillclerk@gmail.com](mailto:ridingmillclerk@gmail.com)*

[illegible]



## Yearly Accounts

We publish our accounts each year on our website and the notice board. As a resident of the parish you have the right to view the accounts at certain times each year. To help make our work more transparent we have summarised last year's accounts for information.

Notable expenses in the last financial year:

- Preparatory work for redevelopment of pavilion i.e. planning fees /architect fees
- Additional donation to Village Hall Trust to help support it during Covid
- Ash tree work
- Covid expenses – Zoom subscription, conference microphone
- Neighbourhood Plan – subscription to Survey Monkey and printing costs

Expenditure		
	2020/21	2019/20
<b>Staff Costs</b>	£6,314	£5,898
<b>Insurance</b>	£1,877	£2,551
<b>General Admin (Stationery, room hire, subscriptions and website costs)</b>	£2,489	£3,185
<b>Professional fees (legal, audit and statutory inspection fees)</b>	£802	£2,160
<b>Donations *</b>	£7,500	£17,840
<b>Maintenance (Grass cutting, tree works, maintenance of assets including Play Park etc.)</b>	£9,204	£11,364
<b>Capital Expenditure</b>	£1,500	£2,872
<b>Miscellaneous</b>	£3,343	£482
<b>Transfer to the reserves *</b>	£19,500	£2,000
<b>TOTAL (excluding VAT)</b>	<b>£52,529</b>	<b>£48,352</b>

Income		
	2020/21	2019/20
<b>Precept</b>	£42,000	£42,000
<b>Interest</b>	£40	£196
<b>Rents, Covenants, Wayleaves</b>	£17,368 *	£357
<b>Grants and donations **</b>	£13,312	£12,000
<b>Miscellaneous</b>	£65	£202
<b>TOTAL (excluding VAT)</b>	<b>£72,785</b>	<b>£54,755</b>

*Ultrafast Broadband – the scheme has been delayed. As soon as Councillor Dale receives more information we will circulate the details via email.*

\* The Parish Council has a sinking fund for the eventual replacement of Millfield Road bridge or Marchburn Lane bridge. £2,500 was set aside from the Precept and £17,000, received from a covenant release, was also transferred to the fund.

\*\* The Parish Council received grants from Active Northumberland and County Councillor Dale totalling £11,000 which are to be used for the pavilion. It also received a grant from Locality to help with the initial survey for the Neighbourhood Plan.



### THE DROP IN 2020/2021

The Drop In began in 2019 when a group of friends met weekly over a game of table tennis and dominoes with time to chat over refreshments, providing the opportunity to keep physically active and mentally alert. As numbers grew, we realised this could be good for anyone living alone, managing bereavement, living with dementia or other health issues, taking on a caring role or in any way

experiencing difficulties socialising, even if only for a short period.

We contacted other groups and the Alzheimer's Society for advice and the Parish Council kindly awarded the group a grant for its work on the application for the recognition of Riding Mill as working towards a Dementia Friendly Community, which was confirmed in June 2020. The Covid pandemic struck in early 2020, lockdowns highlighting the adverse effects of social isolation and the importance of amenities like the Drop In within our community.

With very few opportunities to meet during 2020, this was a sad year during which we

sadly lost two of our regular attendees, but time was spent maintaining contacts and preparing an expanded programme.

2021 brought hope to everyone when in May we held a well-attended and well-received open afternoon. We now have increasing attendance from across the community at our very sociable Tuesday afternoon get-togethers in the Millennium Hall, where everyone is welcome, whenever they wish to drop in. We would like to thank everyone for their continuing support which is very much appreciated.

**Jan Walmsley**



### The Queen's Platinum Jubilee

Next year will be the 70<sup>th</sup> anniversary of the Queen's accession to the throne back in February 1952. A special four-day Jubilee weekend will be created in June but how should the village mark this landmark event? Suggestions so far have included taking part in the 'Big Jubilee Lunch' on Sunday 5<sup>th</sup> June, possibly holding this as a picnic at the sports field and including a sports day and fun activities for the children. Further suggestions are welcome or, even better, if you are prepared to help organise an event please get in touch with the Clerk – [ridingmillclerk@gmail.com](mailto:ridingmillclerk@gmail.com)

## Community Announcements

**Wet wipes are the biggest cause of blockages and sewer flooding, and Northumbrian Water really needs your help. You can make a massive difference by making one easy change: Bin the Wipe.**

Many wipes are made from plastic, which means they don't break down in water like toilet roll. Our toilets and sewer pipes are not designed for wipes. Even if the wipes aren't in your toilet bowl, they might get stuck in the pipes near your home, or someone else's.

Flushed wipes contribute to more than 60% of sewer blockages in the North East: **it's a huge issue.**

Northumbrian Water is working hard to raise awareness of these issues, so that you know about the problems wet wipes can cause.

When sewage can't flow down the sewer pipes because of a blockage, it has to go somewhere else. This could be your street, garden or even back into your home through the toilet, or drains in your bath, sink and shower, flooding your bathroom and home.

The only wipes that can safely be flushed are wipes that have passed the water industry's standard, 'Fine to Flush'.

So, unless they have the **official 'Fine to Flush'** symbol, toilet wipes, baby wipes, make-up wipes and cleaning wipes should all be binned after use - **even ones that say they are flushable.**

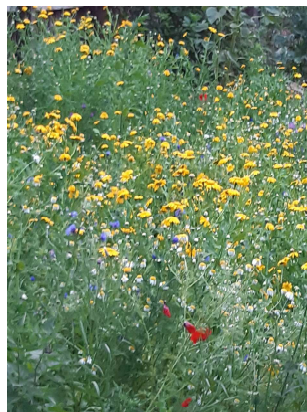
To find out more visit:  
<https://www.nwl.co.uk/binthewipe>

## An Eco Church for Riding Mill: *Colin Dickinson, Chair, St James's Church Green Group*

Residents and visitors cannot fail to have noticed the most obvious result of our Eco Church endeavours to date: the 'greening' of both churchyards. The 'no mow' May leading up to 'let it grow high' July did not meet immediate approval from everyone - but it did produce the flowering of 87 different species of plant and identification of over 50 species of moths and butterflies. Bug hotels and the like are to follow. The wild flowers and planters full of produce and bee friendly plants have brightened up Church Lane. More planting will follow in the autumn.

St James's Environmental Policy aims to work with others in the wider Riding Mill community to identify environmental issues in our area and help develop actions to tackle them. We hope for a joint response within the village in helping to save God's planet. We are also focused on using Fair Trade products to help reduce the exploitation of people around the world.

Improving the wildlife in the churchyards (and our gardens and land owned by the Parish) is only a start. We are planning an energy audit of church premises, will seek to



reduce greenhouse gases by introducing better methods of heating - smart meters have already been installed - and by improving insulation in our buildings. We have made a start with polycarbonate window protection on the north side of church. We will promote greener forms of transport to help minimise greenhouse gas emissions by promoting walking, cycling, scooter use, car sharing and changing to electric vehicles- and encourage others to do the same. We will discourage unnecessary use of water and have now begun to install water meters and reduce water capacity in cisterns in our premises. We plan to use recycled paper and use email and electronic communication to minimise use of hard copy. We will reuse or repair items rather than replace wherever possible.

We will review the policy at least every three years. We want to engage with like-minded residents in joint ventures.

## MEMORIAL PLANTER



We are often asked if a resident can plant a tree or purchase a bench as a memorial to a loved one.

We have rather a lot of benches to maintain already so instead we will be suggesting to relatives that they consider a memorial planter. If you would like to discuss this please contact the Clerk for further details.

Missed bin collection? Street light not working?  
Grit bin needs refilling?

Report these problems on the Northumberland County Council website with just a few clicks

Go to:  
<http://www.northumberland.gov.uk/> and click on REPORT on the header bar

Alternatively, you can phone 0345 600 6400



Northumberland  
County Council

## Northumberland Communities Together

### 01670 620 015

In Riding Mill we recruited our own local volunteers to help at the beginning of the pandemic. These volunteers collected shopping, delivered meals and prescriptions and took residents to hospital appointments and vaccine clinics. This service was gradually wound down as restrictions were lifted but help does still remain in place at a County level, should anyone need assistance.

Northumberland Communities Together can assist people who are experiencing financial difficulties, struggling with their mental health or simply feeling lonely and overwhelmed.

The phone lines are open 7 days a week from 9 am – 6 pm or you can email [nct@northumberland.gov.uk](mailto:nct@northumberland.gov.uk)

**To book either the Parish Hall or the Millennium Hall, please contact Judy Wilthew on 07592 898025**

### Royal Voluntary Service – Community Transport

RVS has volunteers ready to support those over 50 who seek support to reduce isolation, loneliness and reconnect with their local communities. The volunteers will support clients to their favourite club, shopping, to attend medical appointments and personal care appointments. Is there a cost? RVS drivers are volunteers so anyone using the service is asked to cover the fuel costs with a small fee based on mileage. Volunteers undergo the proper checks and carry ID so you can be sure they're genuine and trustworthy. RVS volunteers are from many walks of life, and are all trained in Safeguarding, Dementia Awareness and Confidentiality. RVS is also keen to encourage more people to step forward and join their team of volunteers. To make a referral or to obtain further information, please phone the Northumberland Hub on **01668 260 248**  
Website: [www.royalvoluntaryservice.org.uk](http://www.royalvoluntaryservice.org.uk)

### Riding Mill Golf Society



**Do you play golf?** Do you have a home club?

RMGS have monthly outings to various courses around the region during Spring, Summer and Autumn. If you are interested in joining us, contact Rob Archer on **07957509514**

### Riding Mill Tennis Club



This has been an exceedingly difficult year for the club adhering to rules and regulations on play only to find them cancelled completely for some months. However, club tennis has resumed from a newly refreshed clubhouse and competitive league matches are taking place.

Club social tennis takes place on Monday and Wednesday evenings and Saturday mornings with club members' coaching available on Tuesday evenings. Individual coaching is by arrangement with the club coach. We also have a successful junior coaching session on Sunday mornings.

We play all year and, in most weathers, so winter membership is available from 1<sup>st</sup> October. Our Multi-Use Games Area is available for other sports and this year has been the venue for Netball.

If you require any further details about our activities, please contact Rob Archer on **07957509514** or go to our website <https://clubspark.lta.org.uk/RMTC>



citizens advice Northumberland

The Community Centre  
Gilesgate  
Hexham  
Northumberland  
NE46 3NP  
0808 278 7944  
01670 339985 (to cancel or rearrange an appointment)

Advice Line 0808 278 7944  
Debt Line 01670 339960

Drop-in and appointments  
Tuesday and Fridays 10 -12



Need help with transport to medical appointments, church, lunch clubs, shopping or social outings?

Adapt (North East) may be able to help. To speak to an advisor please contact

**03333 441 740**

## Useful Contacts

### Northumberland County Council

0345 600 6400  
01434 400388  
Remember you can report problems via the website [www.northumberland.gov.uk](http://www.northumberland.gov.uk)

### Member of Parliament

Mr Guy Opperman  
01434 239205 email: [teamoppy@gmail.com](mailto:teamoppy@gmail.com)  
020 7219 7227 email: [guy.opperman.mp@parliament.uk](mailto:guy.opperman.mp@parliament.uk)

### Hospitals/Doctors

Corbridge Medical Group  
01434 632011

Branch End Surgery  
01661 842626

Hexham General Hospital  
0344 811 8111  
Northumbria Specialist  
Emergency Care Hospital  
0344 811 8111  
Newcastle RVI / Newcastle General Hospital  
0191 233 6161

Emergency 999,  
Non-Urgent 111

**Police** – 999 or 101 for non-emergency

### Utility Services

Gas Emergency  
0800 111 999  
  
Electricity – loss of power 105  
  
Northumbrian Water –  
report a leak -  
0800 393 084  
report water and sewerage flooding-  
0800 328 7648

Environment Agency:  
Floodline –  
0345 988 1188  
Incident Hotline –  
0800 80 70 60

### Schools

Broomhaugh First School  
01434 682374  
Corbridge Middle School  
01434 632191  
Queen Elizabeth High School, Hexham  
01434 610300

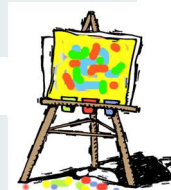
Squirrels Breakfast & After-School Club  
Yvonne Stokoe – 07933 901732

### Travel

Go North East  
0191 420 5050  
Northern Trains  
0800 200 6060  
National Rail Enquiries  
03457 48 49 50  
Newcastle Airport  
0871 882 1121

## Clubs & Societies *Not all clubs have resumed just yet – check with the organiser before attending*

Club	Contact Details / further information
<b>Allotment Association</b>	Sally Rogers - sallyrogers2306@gmail.com
<b>Angling Association</b>	Peter Wood – 01434 682509 peterawood22@gmail.com
<b>Art Club</b>	Janet Bennett – 01434 682478 Meets 1 <sup>st</sup> & 3 <sup>rd</sup> Wednesday of each month at 7 pm in the Millennium Hall
<b>Baby Group</b>	Liz Charman – 01434 682538 Meets Thursday morning in Church Cottage
<b>Badminton Club</b>	Evelyn Downs – 01434 682536 Meets Thursday morning in the Parish Hall
<b>Body Grooving</b>	Allison Austick – 07502 121617 Held Saturday morning in the Millennium Hall
<b>Bridge Club</b>	Pam Niven – 01434 682394 /email: nivenpam@gmail.com Meets Friday afternoon in the Parish Hall, September - June
<b>Carpet Bowls Club</b>	Graham Walmsley – 01434 682168 / 07593 215785 Meets Monday afternoon in the Parish Hall
<b>Choral Society</b>	<a href="http://ridingmillchoral.org.uk/contact-us/">http://ridingmillchoral.org.uk/contact-us/</a> Meets Monday evening in the Parish Hall
<b>Drama Club</b>	Email – rmdcsales@gmail.com Website <a href="http://www.ridingmilledramaclub.com/">http://www.ridingmilledramaclub.com/</a>
<b>Exercise Class for the over 50s to over 90s</b>	Linda Shepherd - 01434 682069 Meets Friday morning in the Parish Hall
<b>Golf</b>	Rob Archer – 01434 682689 Meets once a month April – October
<b>Film Club</b>	Judy Wilthew – j19wilthew@hotmail.com 2 <sup>nd</sup> Friday evening of the month
<b>Karate Class</b>	Run by Peter Atkinson of Seiken Ryu – 07912 533164 / email: peteratkinson89@icloud.com Monday evening in the Parish Hall
<b>Men's Breakfast</b>	David McKenzie – 01434 682771 Meets Saturday morning 4 times a year
<b>Mortal Fool Youth Theatre</b>	General enquiries – 0191 580 1250 / Email: info@mortalfools.org.uk Various classes – see website for details <a href="http://www.mortalfools.org.uk">http://www.mortalfools.org.uk</a>
<b>Northumbria Healers</b>	Pam Down – 07960 380636 /pam@northumbriahealers.com / <a href="http://northumbriahealers.co.uk/">http://northumbriahealers.co.uk/</a> Meets last Saturday of the month in the Parish Hall
<b>Photography Group</b>	Rosie Cunningham – 07415 912237 / rosie.cunningham@ymail.com Meets 2 <sup>nd</sup> Wednesday of the month in the Parish Hall @7pm
<b>Pilates Class</b>	Paula Bennett – 07990 774069 / <a href="http://www.pilateslife.co.uk/">http://www.pilateslife.co.uk/</a> Held Wednesday morning in the Millennium Hall
<b>Preschool</b>	Pre-School leader – 07368223910 (term-time only) /Email: leader.rmop@outlook.com Carole Smith – 01434 682232 /chair.rmop@outlook.com (Chair of Management Committee)
<b>Riding Mill Singers</b>	Carole Craig Gilby – 07950 974874 / craiggilby@gmail.com Wednesday 1.30 – 2.30 in the Parish Hall
<b>Scouts</b>	David McKenzie – 01434 682771 Tuesday & Friday in the Millennium Hall
<b>Spanish classes for children</b>	Paula Pocock – 07885 468566 / Email: solecitospanish@gmail.com Held Monday afternoon in the Parish Hall
<b>Sports Club</b>	Cricket enquiries: Steve Kent – 07910 035715 Football enquiries: Mark Robinson – 07810 580140
<b>Table Tennis Club</b>	Mark Twelftree – 07764 221942 / Monday evening in the Millennium Hall or Anne Lawrence – 01434 682351 / Tuesday afternoon in the Parish Hall
<b>Tennis Club</b>	Rob Archer – 01434 682689 / 07957 509514 Website: <a href="http://ridingmilltennis.co.uk/">http://ridingmilltennis.co.uk/</a>
<b>Tuesday Drop in Group</b>	Jan Walmsley – 07955 630802 Meets Tuesday afternoon from 2-4 pm in the Millennium Hall
<b>Tynedale Chess Club</b>	Tim Wrigley – 01434 681487 / <a href="https://tynedalechess.wordpress.com/">https://tynedalechess.wordpress.com/</a> Normally meets Thursday evenings (September – April) at Corbridge Parish Hall But currently operating online only
<b>Tynedale Symphony</b>	Colin Dickinson – 01434 682337 / dicolin1@gmail.com Meets every Thursday (apart from the 1 <sup>st</sup> ) in the Parish Hall
<b>Women's Institute</b>	Barbara Nelson – 01434 682739 / barbara.lambert.nelson@gmail.com Meets 1 <sup>st</sup> Thursday of the month in the Parish Hall
<b>Yoga Class</b>	Clare – hopeyoga2018@outlook.com Held Wednesday evening in the Parish Hall



**For further details visit the VHT website:**  
**<https://www.ridingmillvillagehalls.org>**